



HAZARDOUS ENVIRONMENT HOISTS



WRIGHT[®]

SPEEDWAY[®] AND WORK-RATED[®] HOISTS

THE NEW CENTURY SERIES[®]

The best hoists for hazardous environments

Five frame sizes in capacities of 1 to 25 Ton

Acco Material Handling Solutions specializes in producing a wide variety of wire rope hoists for use in hazardous environments. The New Century Series® Speedway® and Work-Rated® models can be ordered for specific **Class, Group** and **Division** applications.

Hoists can be ordered for the following environments:

FLAMMABLE GASES /VAPORS – Class 1

- Groups C & D, Division 1
- Groups B, C, & D, Division 2

COMBUSTIBLE DUSTS – Class 2

- Groups E, F, & G, Divisions 1 & 2

Definition of CLASS, GROUP and DIVISION:

CLASS 1 – Locations where flammable gases or vapors are or may be present in the air in quantities sufficient to produce explosive or ignitable mixtures

CLASS 2 – Locations where flammable dusts are or may be present in the air in quantities sufficient to produce explosive or ignitable mixtures

GROUP B – Hydrogen, etc.

GROUP C – Ethyl-ether, ethylene, etc.

GROUP D – Gasoline, hexane, naphtha, propane, alcohol, etc.

GROUP E – Metallic dust

GROUP F – Carbon black, coal, coke, etc.

GROUP G – Flour starch grain, etc.

DIVISION 1 – Where combustible gases, vapors, or dusts are always present under normal operating conditions

DIVISION 2 – Where combustible gases, vapors, or dusts may be present under abnormal operating conditions

SPARK RESISTANT OPTIONS

Electrical classifications are just that. By specifying a Class, Group, & Division, you are simply requesting the required components for the electrical equipment provided on the hoist. Spark resistant options are strictly for the mechanical portion of the hoist, and may or may not be required for your application. Bronze & stainless steel trolley wheels, stainless steel wire rope, bronze & stainless steel load hooks with stainless steel latch, bronze coated hook with stainless steel latch are the most common mechanical options.

OTHER OPTIONS AVAILABLE

- Upper/lower geared limit switch
- Intrinsically safe trolley travel limit switch
- Tagline tow arm
- Audible or visual indicators
- Radio controls
- Trolley ACM
- Trolley brake

MOTORS

Hoist and trolley motors are manufactured and labeled for the specific environment for which they are designed. Hoists are available for 208/230/460/575V 3-Phase 60Hz power supplies. Hoists can also be built for 380/415V 3-Phase 50Hz power supplies. Consult with the factory for power supply requirements not listed above.

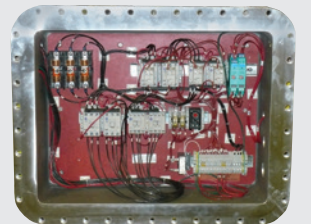
BRAKES

A/C disc hoist brake and optional disc trolley brake are manufactured and labeled for the specific environment for which they are designed.



CONTROLS

Single speed and two speed controllers are available for all area classifications noted. Variable frequency drive (VFD) controls are available for most classifications. Consult with the factory for VFD applications.



PENDANTS

Control pendants are available in a NEMA 7/9 enclosure or in a NEMA 4X enclosure with intrinsically safe controls.

SWITCHES

Upper gravity limit switch and overload cutoff device (overload is optional on Speedway® hoists) are intrinsically safe, eliminating the need for bulky limit switch housings. Optional upper/lower geared limit switches are also intrinsically safe.

CONTROL ENCLOSURE

A NEMA 4/7/9 cast aluminum control enclosure is provided for all Class 1, Division 1 or 2 and Class 2, Division 1 environments. A NEMA 12 dust-tight control enclosure is provided for all Class 2, Division 2 environments. All electrical conduit and fittings used meet or exceed the environmental requirements.



Explosion Proof Hoists



Explosion proof Work-Rated® hoist with radio control.

Spark Resistant Hoists



Spark resistant Accolift hand chain hoists are also available. Contact the factory for more information.

Wright Crane Components

All Acco Wright® crane components are available for **hazardous environment applications**. In addition to the options listed for the hoists, spark resistant rail sweeps and intrinsically safe relays for pendants are available.



ACCO Material Handling Solutions

76 Acco Drive, Box 792, York, PA 17405-0792

717-741-4863, 800-967-7333, FAX 800-715-8897

E-mail: info@accomhs.com

www.accomhs.com

