

5 TON MONORAIL HOISTS

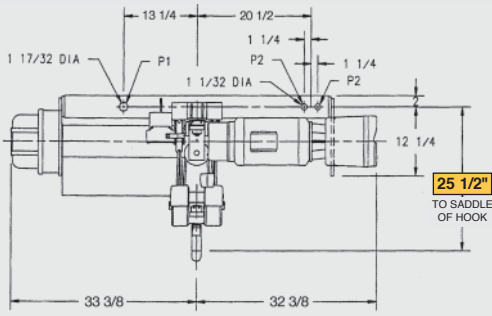


**WRIGHT**<sup>®</sup>

**SPEEDWAY**<sup>®</sup> HOISTS

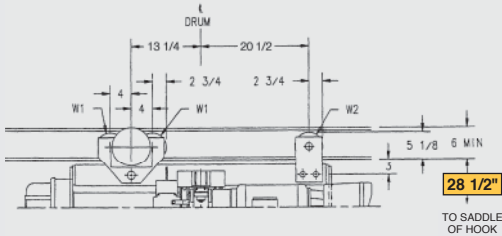
**THE NEW CENTURY SERIES**<sup>®</sup>

### LUG MOUNTED



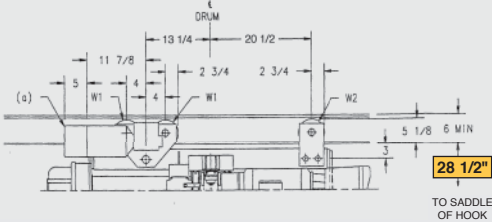
Lift (Ft)	Approx Weight	Pin Load in Lbs. (Max)	
		P1	P2
19'6"	630	6458	2086

### PLAIN OR GEARED TROLLEY



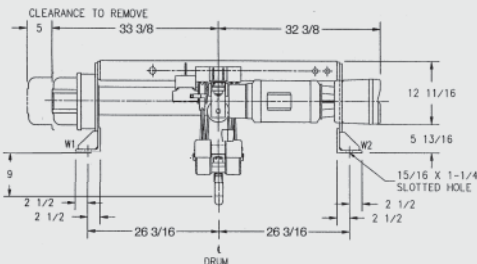
Lift (Ft)	Approx Weight	Wheel Load in Lbs. (Max)	
		PR.W1	PR.W2
19'6"	783	3275	4233

### MOTORIZED TROLLEY



Lift (Ft)	Approx Weight	Wheel Load in Lbs. (Max)	
		PR.W1	PR.W2
19'6"	849	3308	4233

### DECK MOUNTED



Lift (Ft)	Load in pounds per side	
	W1	W2
19'6"	5257	5439

# SPEEDWAY<sup>®</sup> HOISTS

## THE NEW CENTURY SERIES<sup>®</sup>

### 5 Ton



### 5 Ton monorail SPEEDWAY<sup>®</sup> hoists from WRIGHT<sup>®</sup>

SPEEDWAY<sup>®</sup> hoists are an excellent choice for lower volume lifting with 30 minutes of operation per hour with a maximum of 300 starts an hour as defined by Hoist Duty Class H4 of ASME HST-4.

#### COMPARE THESE FEATURES

- H-4 duty classification (ASME HST-4)
- Machine cut, case hardened, alloy steel gears
- Steel sheaves in load block
- Single or two speed motors
- Largest oil bath in the industry
- Mechanical load brake
- U.S. manufactured motors
- Motor thermostats
- Motor brake
- Easy maintenance of gears
- Complies with ASME HST-4 both mechanically and electrically

#### OPTIONAL FEATURES

- Overload cutoff
- Motor fuse holders and fuses
- Geared limit switch
- Variable speed by inverter control
- Bullard hook
- Trolley modifications & speeds
- Operational on patented track
- ACM trolleys and brakes
- Trolley drop down lugs & bumpers
- Tagline tow arm
- Epoxy paints available on application
- Audible or visual hoist overload indicator
- Running time meter
- Many other options available upon application

SERIES	CAPACITY	LIFT	SPEED	REEVING
31	5T	19'6"	12 FPM	4PD



#### ACCO Material Handling Solutions

76 Acco Drive, Box 792, York, PA 17405-0792

717-741-4863, 800-967-7333, FAX 800-715-8897

E-mail: info@accomhs.com

www.accomhs.com