



**SHB MANUAL CHAIN HOIST
1 TON TO 10 TON
SPECIFICATIONS AND DIMENSIONS**

Purpose

To provide dimension and specification information for SHB HOIST.

Attachments

Pg. No. 2	Imperial Data Chart	SHB HOIST
Pg. No. 2	Metric Data Chart	SHB HOIST
Pg. No. 3	Line Drawing FIG. 1	SHB HOIST

SHB HOIST – Imperial Specifications

Cap. (Tons)	Product Code	Headroom C (in)	Std Lift ¹ (ft)	Pull to Lift Load (lbs)	Overhaul Ratio	Min. Radius for Curve ² (in)	Flange Width Adjustability B (in)		Load Chain Dia. (mm) x Chain Fall Lines	Net Weight ³ (lbs)	Shipping Weight Approx. (lbs)	Weight for Add'l. One ft of Lift (lbs)
							Standard	Option				
1	SHB010	4.5	20	59	50	N/A	2.28 to 6.42	6.43 to 12.00	5.0 x 2	166	176	2.0
2	SHB020	5.7		54	114		3.23 to 8.03	8.04 to 12.00	7.1 x 2	271	281	2.8
3	SHB030	6.5		63	140		3.94 to 8.03		8.0 x 2	385	395	3.1
5	SHB050	7.7		75	198		5.50 to 8.66		8.67 to 12.00	9.0 x 2	655	665
8	SHB080	10.0		65	396							
10	SHB100		81	81		9.0 x 4						

¹Special lengths of load and hand chain available upon request.

²Due to wheelbase length, the SHB cannot negotiate a curve.

³Weights are for standard flange width.

SHB HOIST – Imperial Dimensions

Cap. (Tons)	Product Code	b1 (in)	b2 (in)	d (ft)	e1 (in)	e2 (in)	f (ft)	g (in)	h (in)	i (in)	j (in)	k (in)	m (in)	n1 (in)	n2 (in)	q (in)	r (in)	s (in)	t (in)	u (in)	v (in)
1	SHB010	8.0	13.5	19.3	7.9	7.0	19.3	1.1	4.17	2.80	1.0	4.5	8.7	5.9	11.4	14.6	1.8	B-1.6	1.22	6.02	9.6
2	SHB020	9.6	15.7	19.0	8.9	7.6	19.0	1.4	5.00	3.35	1.2	6.6	9.9	7.1	13.2	17.3	2.1	B-2.0	1.42		6.02
3	SHB030	11.6	18.3		9.5	8.1		1.7	5.83	3.94	1.3	7.0	10.6	8.7	15.4	18.3	2.4	B-2.2	1.73	7.20	12.8
5	SHB050	13.8	21.3		10.5	8.8		1.8	6.65	4.65	1.4	8.8	11.9	10.4	17.9	19.5	2.8	B-2.9	2.17	7.20	15.4
8	SHB080	15.5	23.1	11.4	8.5			2.4	7.29	6.10	1.3	10.5	13.2	11.8	19.4	19.6	3.3	B-3.5	2.76	8.43	16.5
10	SHB100																				

SHB HOIST – Metric Specifications

Cap. (Tons)	Product Code	Headroom C (mm)	Std Lift ¹ (m)	Pull to Lift Load (kg)	Overhaul Ratio	Min. Radius for Curve ² (mm)	Flange Width Adjustability B (mm)		Load Chain Dia. (mm) x Chain Fall Lines	Net Weight ³ (kg)	Shipping Weight Approx. (kg)	Weight for Add'l. One meter of Lift (kg)
							Standard	Option				
1	SHB010	115	6.0	27	50	N/A	58-163	164-305	5.0 x 2	75	80	3.0
2	SHB020	145		25	114		82-204	205-305	7.1 x 2	123	128	4.2
3	SHB030	165		29	140		100-204		8.0 x 2	175	180	4.6
5	SHB050	195		34	198		140-220		9.0 x 2	297	302	5.5
8	SHB080	255		30	396							
10	SHB100		37	37		9.0 x 4						

¹Special lengths of load and hand chain available upon request.

²Due to wheelbase length, the SHB cannot negotiate a curve.

³Weights are for standard flange width.

SHB HOIST – Metric Dimensions

Cap. (Tons)	Product Code	b1 (mm)	b2 (mm)	d (m)	e1 (mm)	e2 (mm)	f (m)	g (mm)	h (mm)	i (mm)	j (mm)	k (mm)	m (mm)	n1 (mm)	n2 (mm)	q (mm)	r (mm)	s (mm)	t (mm)	u (mm)	v (mm)
1	SHB010	203	343	5.9	200	177	5.9	29	106	71	25	113	221	150	290	370	46	B-42	31	153	245
2	SHB020	244	399	5.8	227	193	5.8	36	127	85	31	168	252	180	335	439	53	B-51	36		153
3	SHB030	294	464		240	205		43	148	100	32	177	269	220	390	465	61	B-56	44	183	325
5	SHB050	350	540		266	223		47	169	118	36	224	301	265	455	496	71	B-74	55	183	390
8	SHB080	393	586	289	217			62	185	155	33	268	335	300	493	498	84	B-89	70	214	420
10	SHB100																				

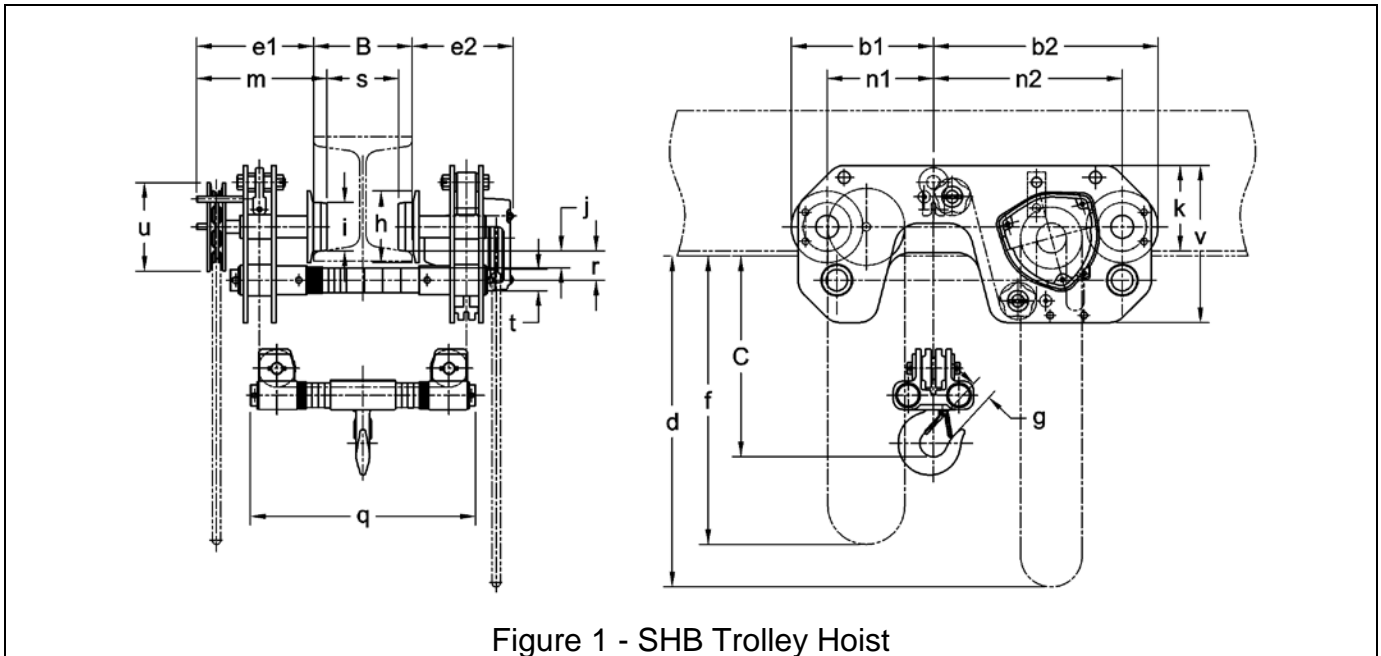


Figure 1 - SHB Trolley Hoist