

HARRINGTON
A KITO GROUP COMPANY



HARRINGTON
A KITO GROUP COMPANY



**TIGER
TRACK**

Workstation Cranes and Monorails

Technical Manual

Table Of Contents

Product Introduction	3
Tiger Track Profiles	4
Tiger Track Workstation Cranes	
Single Girder	5-8
Double Girder	9-13
Tiger Track Standard and Low Headroom Bridge and Runway Specifications	
Single Girder	14
Double Girder	15
Tiger Track Trolleys	
Single Trolley	16
Double Trolley	17
Double Girder Trolley	18
Tiger Track Monorails	19

Product Introduction

Our Tiger Track workstation cranes are lightweight yet powerful modular solutions that make operation even easier than using traditional bridge cranes. The enclosed track design maximizes smooth movement and minimizes the accumulation of dirt and dust in the track. This means operating the system will take very little effort from the user.

Harrington Tiger Track Workstation Cranes are fully customizable to fit your exact material handling and production needs and can be easily modified by adding components as your production or facility requirements change.

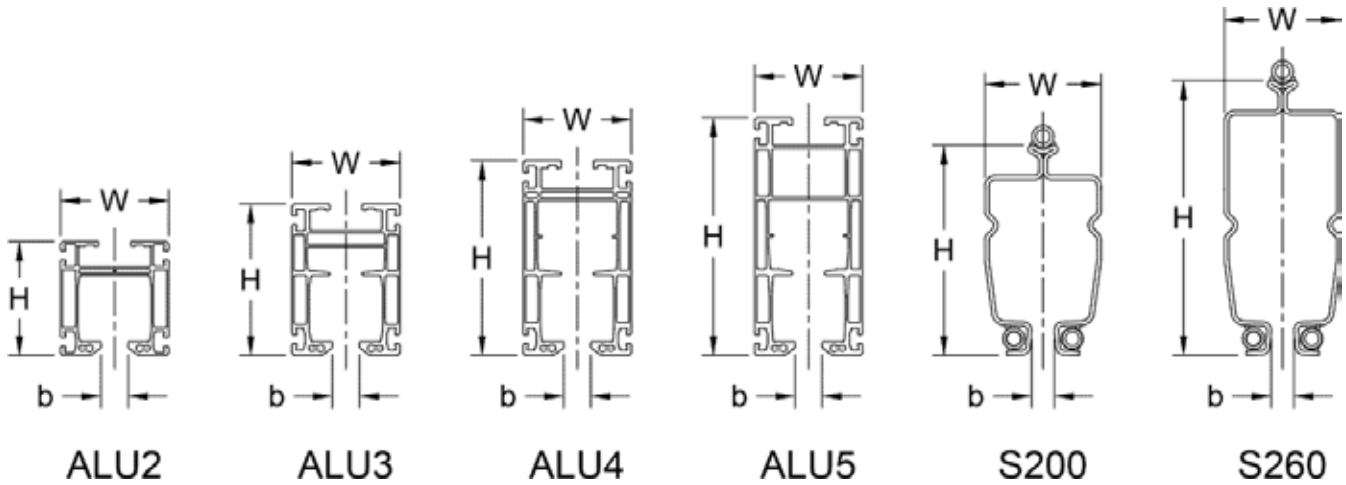
- Single and double girder cranes
- All steel, all aluminum or aluminum bridge with steel runway
- Free standing or ceiling suspended
- 1/8 through 2 Ton capacities
- Manual trolleys and bridges
- For use with either manual or powered hoists
- Indoor use only
- ANSI MH27.2 - Enclosed Track Underhung Cranes and Monorail Systems
- ANSI/ASME B30.17
- ASTM - Material Standards
- AWS - Welding Standards

Our Tiger Track Monorails are suitable for long production lines in areas where straight line movement is needed. Available in capacities up to 1 Ton in either steel or aluminum.

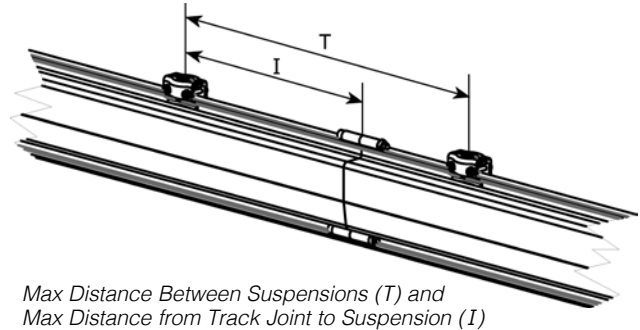
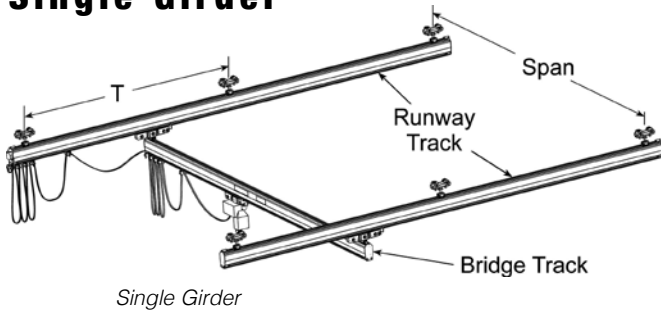
Tiger Track Profiles

TIGER TRACK PROFILE CROSS SECTION — DIMENSIONS

Product Code	Material	H (in)	W (in)	b (in)	Net Weight (lbs/ft)
ALU2	Aluminum	4.1	3.9	1.0	3.4
ALU3	Aluminum	5.5	3.9	1.0	5.1
ALU4	Aluminum	7.1	3.9	1.0	6.3
ALU5	Aluminum	8.7	3.9	1.0	7.3
S200	Steel	7.6	4.3	0.8	11.6
S260	Steel	10.0	4.3	0.8	14.1



Tiger Track Workstation Cranes Single Girder

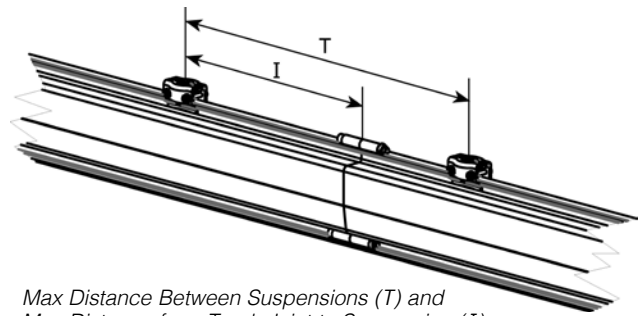
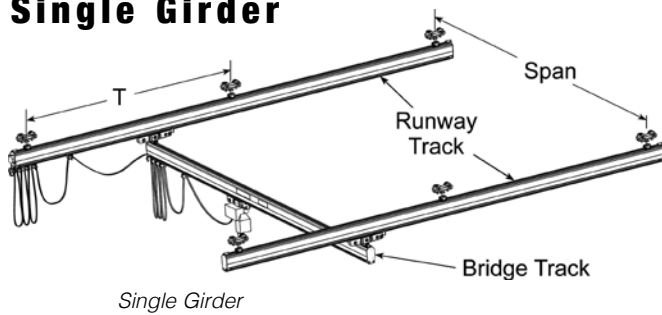


1/8 TON SINGLE GIRDER TIGER TRACK WORKSTATION CRANE* – SPECIFICATIONS AND DIMENSIONS

Runway Capacity (Tons)	Bridge Capacity (Tons)	Bridge Enclosed Track		Runway Enclosed Track			
		Bridge Profile	Max Span (ft-in)	Runway Profile	Max. Distance Between Suspensions T (ft-in)	Max. Distance from Track Joint to Suspension I (ft-in)	Max. Suspension Force (lbs)
1/8	1/8	S200	25' - 7"	S200	23' - 5"	8' - 6"	1050
				S260	31' - 10"	9' - 2"	1280
		ALU2	9' - 2"	ALU2	8' - 4"	0' - 9"	590
				ALU3	13' - 1"	1' - 0"	650
				ALU4	18' - 4"	1' - 5"	710
				ALU5	22' - 10"	1' - 9"	780
		ALU3	14' - 3"	ALU2	8' - 2"	0' - 9"	620
				ALU3	12' - 10"	0' - 11"	670
				ALU4	18' - 0"	1' - 4"	730
				ALU5	22' - 5"	1' - 8"	800
		ALU4	19' - 10"	ALU2	8' - 0"	0' - 8"	640
				ALU3	12' - 7"	0' - 11"	700
				ALU4	17' - 8"	1' - 4"	750
				ALU5	22' - 1"	1' - 8"	820
		ALU5	24' - 6"	ALU2	7' - 10"	0' - 8"	670
				ALU3	12' - 3"	0' - 10"	730
				ALU4	17' - 3"	1' - 3"	780
				ALU5	21' - 8"	1' - 7"	850
		ALU2	9' - 2"	S200	25' - 3"	12' - 7"	940
				S260	34' - 0"	11' - 10"	1180
		ALU3	14' - 3"	S200	24' - 11"	12' - 5"	960
				S260	33' - 7"	11' - 3"	1200
		ALU4	19' - 10"	S200	24' - 7"	11' - 3"	980
				S260	33' - 2"	10' - 9"	1220
		ALU5	24' - 6"	S200	24' - 2"	9' - 11"	1010
				S260	32' - 8"	10' - 1"	1240

* Values are for 1-trolley/hoist, 1-crane systems. Systems with 2-trolley/hoists and/or 2-cranes are available.

Tiger Track Workstation Cranes Single Girder



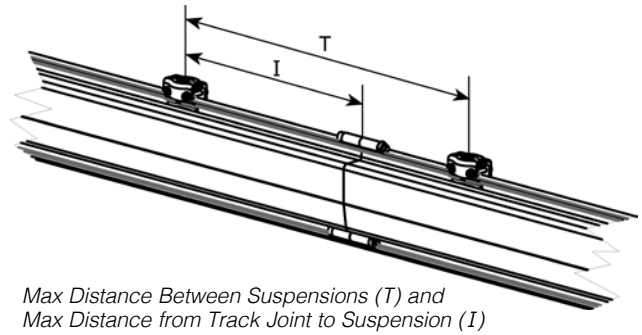
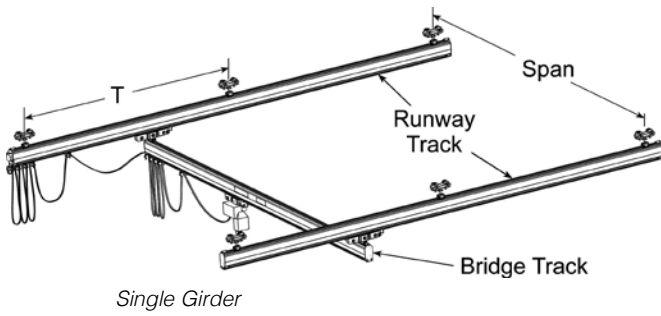
Max Distance Between Suspensions (T) and
Max Distance from Track Joint to Suspension (I)

1/4 TON SINGLE GIRDER TIGER TRACK WORKSTATION CRANE* – SPECIFICATIONS AND DIMENSIONS

Runway Capacity (Tons)	Bridge Capacity (Tons)	Bridge Enclosed Track		Runway Enclosed Track			
		Bridge Profile	Max Span (ft-in)	Runway Profile	Max. Distance Between Suspensions T (ft-in)	Max. Distance from Track Joint to Suspension I (ft-in)	Max. Suspension Force (lbs)
1/4	1/4	S200	23' - 0"	S200	20' - 9"	5' - 8"	1270
				S260	28' - 8"	6' - 6"	1480
		S260	25' - 7"	S200	20' - 4"	5' - 4"	1320
				S260	28' - 2"	6' - 2"	1520
		ALU2	7' - 4"	ALU2	6' - 11"	0' - 6"	860
				ALU3	10' - 11"	0' - 8"	910
				ALU4	15' - 5"	1' - 0"	950
				ALU5	19' - 5"	1' - 2"	1020
		ALU3	11' - 6"	ALU2	6' - 10"	0' - 6"	880
				ALU3	10' - 9"	0' - 8"	930
				ALU4	15' - 3"	0' - 11"	970
				ALU5	19' - 3"	1' - 2"	1040
		ALU4	16' - 3"	ALU2	6' - 9"	0' - 5"	900
				ALU3	10' - 8"	0' - 7"	940
				ALU4	15' - 1"	0' - 11"	990
				ALU5	19' - 0"	1' - 2"	1060
		ALU5	20' - 5"	ALU2	6' - 8"	0' - 5"	930
				ALU3	10' - 6"	0' - 7"	970
				ALU4	14' - 10"	0' - 11"	1020
				ALU5	18' - 9"	1' - 1"	1080
		ALU2	7' - 4"	S200	21' - 11"	6' - 9"	1160
				S260	28' - 2"	8' - 0"	1350
		ALU3	11' - 6"	S200	21' - 9"	6' - 6"	1180
				S260	29' - 11"	7' - 5"	1400
		ALU4	16' - 3"	S200	21' - 6"	6' - 4"	1200
				S260	29' - 8"	7' - 3"	1410
		ALU5	20' - 5"	S200	21' - 3"	6' - 1"	1220
				S260	29' - 4"	7' - 0"	1440

* Values are for 1-trolley/hoist, 1-crane systems. Systems with 2-trolley/hoists and/or 2-cranes are available.

TIGER TRACK WORKSTATION CRANES AND MONORAILS



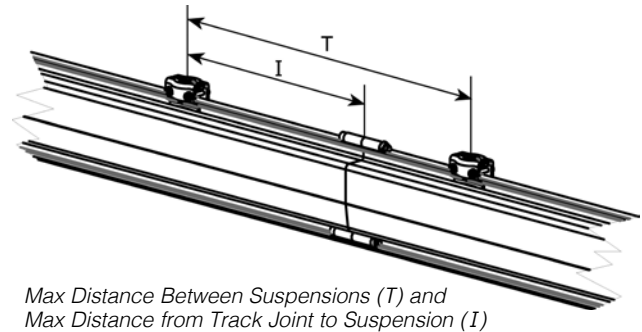
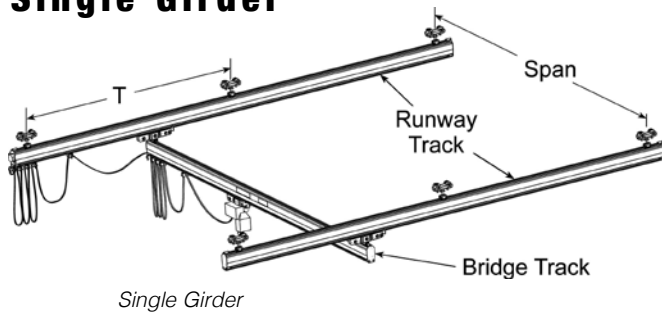
Max Distance Between Suspensions (T) and
Max Distance from Track Joint to Suspension (I)

1/2 TON SINGLE GIRDER TIGER TRACK WORKSTATION CRANE* – SPECIFICATIONS AND DIMENSIONS

Runway Capacity (Tons)	Bridge Capacity (Tons)	Bridge Enclosed Track		Runway Enclosed Track			
		Bridge Profile	Max Span (ft-in)	Runway Profile	Max. Distance Between Suspensions T (ft-in)	Max. Distance from Track Joint to Suspension I (ft-in)	Max. Suspension Force (lbs)
1/2	1/2	S200	18' - 4"	S200	17' - 3"	3' - 5"	1740
				S260	24' - 3"	4' - 2"	1930
		S260	25' - 7"	S200	16' - 10"	3' - 3"	1810
				S260	23' - 9"	3' - 11"	1990
		ALU3	8' - 10"	ALU3	8' - 6"	0' - 4"	1450
				ALU4	12' - 1"	0' - 7"	1490
				ALU5	15' - 5"	0' - 9"	1540
		ALU4	12' - 7"	ALU3	8' - 6"	0' - 4"	1470
				ALU4	12' - 1"	0' - 7"	1500
				ALU5	15' - 4"	0' - 8"	1560
		ALU5	16' - 0"	ALU3	8' - 5"	0' - 4"	1490
				ALU4	11' - 11"	0' - 6"	1530
				ALU5	15' - 3"	0' - 8"	1580
		ALU3	8' - 10"	S200	17' - 9"	3' - 8"	1660
				S260	24' - 11"	4' - 5"	1850
		ALU4	12' - 7"	S200	17' - 8"	3' - 7"	1680
				S260	24' - 9"	4' - 5"	1860
		ALU5	16' - 0"	S200	17' - 6"	3' - 7"	1700
				S260	24' - 7"	4' - 4"	1880

* Values are for 1-trolley/hoist, 1-crane systems. Systems with 2-trolley/hoists and/or 2-cranes are available.

Tiger Track Workstation Cranes Single Girder



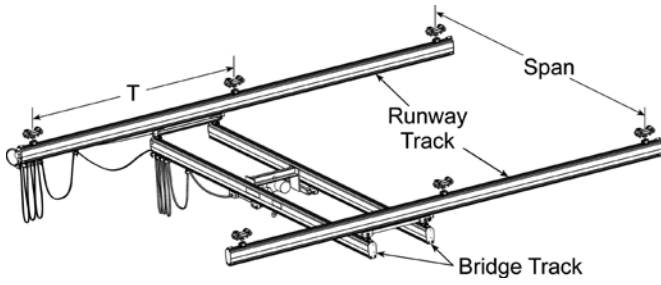
Max Distance Between Suspensions (T) and
Max Distance from Track Joint to Suspension (I)

1 TON SINGLE GIRDER TIGER TRACK WORKSTATION CRANE* – SPECIFICATIONS AND DIMENSIONS

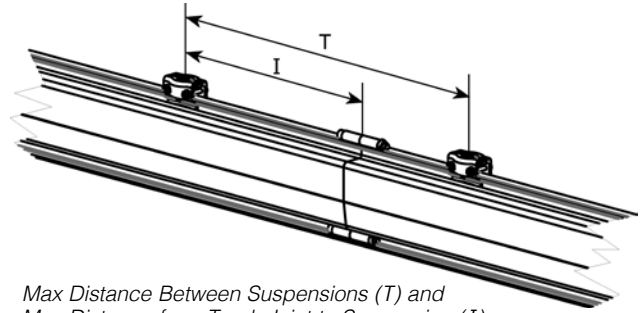
Runway Capacity (Tons)	Bridge Capacity (Tons)	Bridge Enclosed Track		Runway Enclosed Track			
		Bridge Profile	Max Span (ft-in)	Runway Profile	Max. Distance Between Suspensions T (ft-in)	Max. Distance from Track Joint to Suspension I (ft-in)	Max. Suspension Force (lbs)
1	1	S200	13' - 9"	S200	13' - 4"	1' - 10"	2790
				S260	19' - 1"	2' - 4"	2940
		S260	19' - 8"	S200	13' - 2"	1' - 10"	2850
				S260	18' - 10"	2' - 3"	3000
		ALU4	8' - 4"	ALU4	7' - 11"	0' - 8"	2600
				ALU5	10' - 9"	0' - 10"	2640
		ALU5	11' - 5"	ALU4	7' - 10"	0' - 8"	2610
				ALU5	10' - 9"	0' - 10"	2660
		ALU4	8' - 4"	S200	13' - 6"	1' - 11"	2740
				S260	19' - 3"	2' - 4"	2890
		ALU5	11' - 5"	S200	13' - 5"	1' - 11"	2760
				S260	19' - 2"	2' - 4"	2900

* Values are for 1-trolley/hoist, 1-crane systems. Systems with 2-trolley/hoists and/or 2-cranes are available.

TIGER TRACK ENCLOSED TRACK BRIDGE CRANES



Double Girder



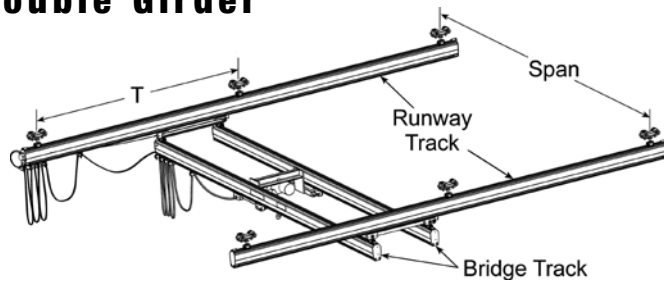
Max Distance Between Suspensions (T) and
Max Distance from Track Joint to Suspension (I)

1/8 TON DOUBLE GIRDER TIGER TRACK WORKSTATION CRANE* – SPECIFICATIONS AND DIMENSIONS

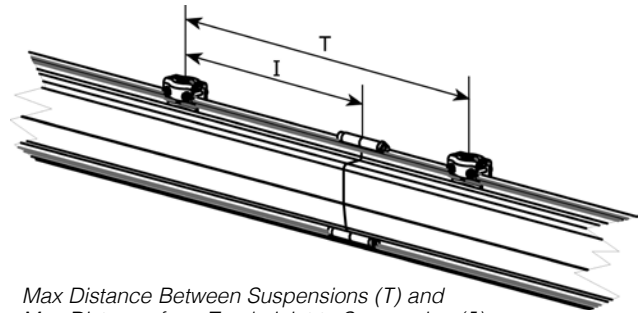
Runway Capacity (Tons)	Bridge Capacity (Tons)	Bridge Enclosed Track		Runway Enclosed Track			
		Bridge Profile	Max Span (ft-in)	Runway Profile	Max. Distance Between Suspensions T (ft-in)	Max. Distance from Track Joint to Suspension I (ft-in)	Max. Suspension Force (lbs)
1/8	1/8	S200	25' - 7"	S200	20' - 7"	6' - 2"	1300
				S260	28' - 5"	6' - 9"	1520
		ALU2	11' - 6"	ALU2	8' - 0"	0' - 8"	720
				ALU3	12' - 0"	0' - 10"	790
				ALU4	16' - 8"	1' - 3"	850
				ALU5	20' - 10"	1' - 6"	920
		ALU3	17' - 5"	ALU2	7' - 8"	0' - 8"	780
				ALU3	11' - 7"	0' - 10"	850
				ALU4	16' - 1"	1' - 2"	900
				ALU5	20' - 2"	1' - 5"	970
		ALU4	23' - 9"	ALU2	7' - 6"	0' - 7"	830
				ALU3	11' - 3"	0' - 9"	900
				ALU4	15' - 8"	1' - 1"	950
				ALU5	19' - 7"	1' - 4"	1020
		ALU5	25' - 7"	ALU2	7' - 4"	0' - 7"	870
				ALU3	11' - 0"	0' - 8"	940
				ALU4	15' - 3"	1' - 0"	990
				ALU5	19' - 2"	1' - 3"	1060
		ALU2	11' - 6"	S200	23' - 3"	11' - 7"	1070
				S260	31' - 7"	9' - 8"	1300
		ALU3	17' - 5"	S200	22' - 7"	8' - 11"	1120
				S260	30' - 10"	8' - 10"	1340
		ALU4	23' - 9"	S200	22' - 1"	7' - 11"	1170
				S260	30' - 2"	8' - 2"	1390
		ALU5	25' - 7"	S200	21' - 7"	7' - 3"	1210
				S260	29' - 7"	7' - 8"	1420

* Values are for 1-trolley/hoist, 1-crane systems. Systems with 2-trolley/hoists and/or 2-cranes are available.

Tiger Track Workstation Cranes Double Girder



Double Girder

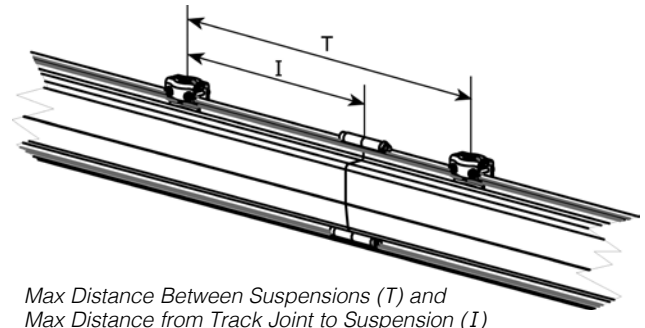
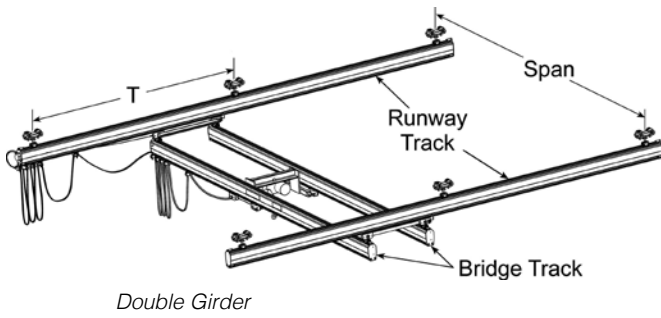


Max Distance Between Suspensions (T) and
Max Distance from Track Joint to Suspension (I)

1/4 TON DOUBLE GIRDER TIGER TRACK WORKSTATION CRANE* – SPECIFICATIONS AND DIMENSIONS

Runway Capacity (Tons)	Bridge Capacity (Tons)	Bridge Enclosed Track		Runway Enclosed Track			
		Bridge Profile	Max Span (ft-in)	Runway Profile	Max. Distance Between Suspensions T (ft-in)	Max. Distance from Track Joint to Suspension I (ft-in)	Max. Suspension Force (lbs)
1/4	1/4	S200	25' - 7"	S200	18' - 8"	4' - 7"	1550
				S260	25' - 11"	5' - 3"	1740
		ALU2	9' - 7"	ALU2	7' - 0"	0' - 6"	970
				ALU3	10' - 6"	0' - 8"	1040
				ALU4	14' - 7"	0' - 11"	1090
				ALU5	18' - 3"	1' - 1"	1160
				ALU2	6' - 10"	0' - 6"	1010
		ALU3	14' - 10"	ALU3	10' - 3"	0' - 7"	1090
				ALU4	14' - 3"	0' - 10"	1140
				ALU5	17' - 10"	1' - 1"	1200
				ALU2	6' - 9"	0' - 6"	1060
		ALU4	20' - 7"	ALU3	10' - 1"	0' - 7"	1130
				ALU4	13' - 11"	0' - 10"	1180
				ALU5	17' - 6"	1' - 0"	1250
				ALU2	6' - 7"	0' - 5"	1120
		ALU5	25' - 4"	ALU3	9' - 9"	0' - 6"	1190
				ALU4	13' - 7"	0' - 9"	1250
				ALU5	17' - 1"	0' - 11"	1310
				ALU2	20' - 8"	6' - 3"	1300
		ALU2	9' - 7"	S200	20' - 8"	6' - 3"	1300
				S260	28' - 6"	6' - 10"	1510
		ALU3	14' - 10"	S200	20' - 3"	5' - 10"	1340
				S260	28' - 0"	6' - 6"	1550
		ALU4	20' - 7"	S200	19' - 11"	5' - 6"	1380
				S260	27' - 6"	6' - 2"	1590
		ALU5	25' - 4"	S200	19' - 5"	5' - 2"	1440
				S260	26' - 11"	5' - 10"	1650

* Values are for 1-trolley/hoist, 1-crane systems. Systems with 2-trolley/hoists and/or 2-cranes are available.

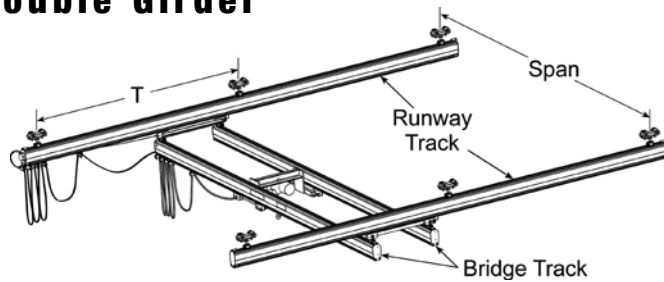


1/2 TON DOUBLE GIRDER TIGER TRACK WORKSTATION CRANE* – SPECIFICATIONS AND DIMENSIONS

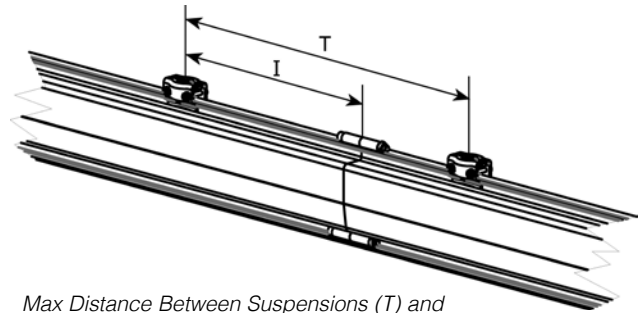
Runway Capacity (Tons)	Bridge Capacity (Tons)	Bridge Enclosed Track		Runway Enclosed Track			
		Bridge Profile	Max Span (ft-in)	Runway Profile	Max. Distance Between Suspensions T (ft-in)	Max. Distance from Track Joint to Suspension I (ft-in)	Max. Suspension Force (lbs)
1/2	1/2	S200	23' - 6"	S200	16' - 1"	3' - 2"	2030
				S260	22' - 7"	3' - 8"	2200
		S260	25' - 7"	S200	15' - 8"	2' - 11"	2130
				S260	22' - 0"	3' - 6"	2300
		ALU2	7' - 6"	ALU3	8' - 8"	0' - 5"	1540
				ALU4	12' - 0"	0' - 7"	1600
				ALU5	15' - 1"	0' - 9"	1660
		ALU3	11' - 10"	ALU3	8' - 7"	0' - 5"	1580
				ALU4	11' - 10"	0' - 7"	1640
				ALU5	14' - 10"	0' - 8"	1700
		ALU4	16' - 8"	ALU3	8' - 6"	0' - 5"	1620
				ALU4	11' - 8"	0' - 7"	1670
				ALU5	14' - 8"	0' - 8"	1740
		ALU5	20' - 11"	ALU3	8' - 4"	0' - 4"	1670
				ALU4	11' - 6"	0' - 6"	1730
				ALU5	14' - 6"	0' - 8"	1790
		ALU2	7' - 6"	S200	17' - 3"	3' - 9"	1780
				S260	23' - 2"	4' - 5"	1950
		ALU3	11' - 10"	S200	17' - 1"	3' - 8"	1820
				S260	23' - 10"	4' - 3"	2000
		ALU4	16' - 8"	S200	16' - 10"	3' - 6"	1850
				S260	23' - 7"	4' - 1"	2040
		ALU5	20' - 11"	S200	16' - 7"	3' - 5"	1910
				S260	23' - 3"	4' - 0"	2090

* Values are for 1-trolley/hoist, 1-crane systems. Systems with 2-trolley/hoists and/or 2-cranes are available.

Tiger Track Workstation Cranes Double Girder



Double Girder

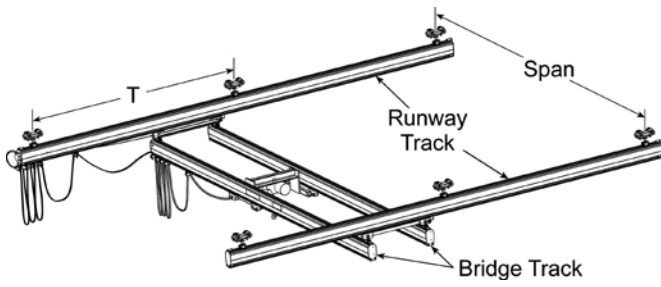


Max Distance Between Suspensions (T) and
Max Distance from Track Joint to Suspension (I)

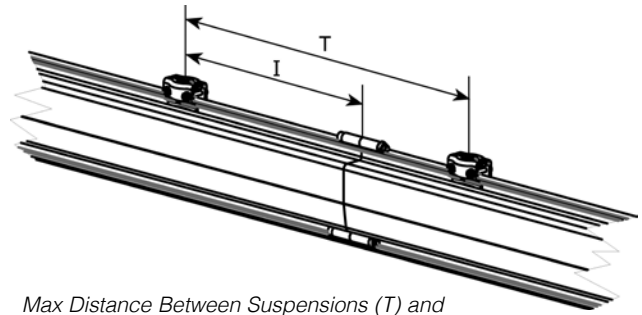
1 TON DOUBLE GIRDER TIGER TRACK WORKSTATION CRANE* – SPECIFICATIONS AND DIMENSIONS

Runway Capacity (Tons)	Bridge Capacity (Tons)	Bridge Enclosed Track		Runway Enclosed Track			
		Bridge Profile	Max Span (ft-in)	Runway Profile	Max. Distance Between Suspensions T (ft-in)	Max. Distance from Track Joint to Suspension I (ft-in)	Max. Suspension Force (lbs)
1	1	S200	18' - 6"	S200	13' - 1"	1' - 11"	3020
				S260	18' - 5"	2' - 3"	3180
		S260	25' - 7"	S200	12' - 9"	1' - 10"	3180
				S260	18' - 0"	2' - 2"	3340
		ALU4	12' - 9"	ALU4	9' - 3"	0' - 9"	2710
				ALU5	11' - 7"	0' - 11"	2770
		ALU5	16' - 2"	ALU4	9' - 2"	0' - 8"	2750
				ALU5	11' - 6"	0' - 10"	2820
		ALU4	12' - 9"	S200	13' - 5"	2' - 0"	2880
				S260	18' - 11"	2' - 5"	3040
		ALU5	16' - 2"	S200	13' - 4"	2' - 0"	2920
				S260	18' - 9"	2' - 5"	3080

* Values are for 1-trolley/hoist, 1-crane systems. Systems with 2-trolley/hoists and/or 2-cranes are available.



Double Girder



Max Distance Between Suspensions (T) and
Max Distance from Track Joint to Suspension (I)

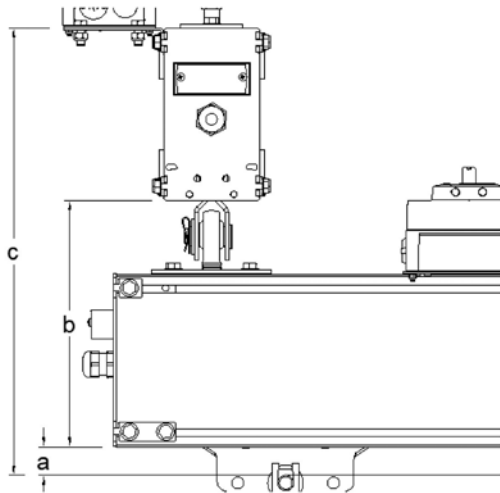
2 TON DOUBLE GIRDER TIGER TRACK WORKSTATION CRANE* – SPECIFICATIONS AND DIMENSIONS

Runway Capacity (Tons)	Bridge Capacity (Tons)	Bridge Enclosed Track		Runway Enclosed Track			
		Bridge Profile	Max Span (ft-in)	Runway Profile	Max. Distance Between Suspensions** (ft-in)	Max. Distance from Track Joint to Suspension** (ft-in)	Max. Suspension Force** (lbs)
2	2	S200	13' - 11"	S200	10' - 0"	1' - 1"	5080
				S260	14' - 3"	1' - 3"	5250
		S260	19' - 9"	S200	9' - 9"	1' - 1"	5200
				S260	13' - 11"	1' - 3"	5380

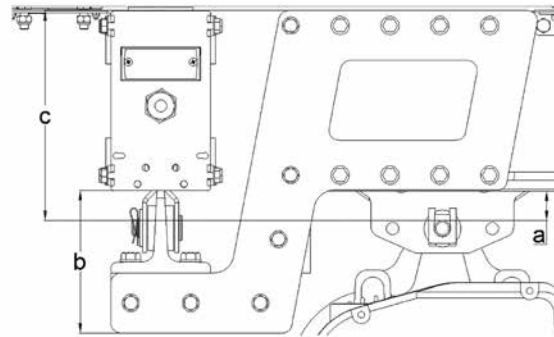
* Values are for 1-trolley/hoist, 1-crane systems. Systems with 2-trolley/hoists and/or 2-cranes are available.

** Requires articulated double runway hangers.

Standard and Low Headroom Workstation Cranes Single Girder



Single Girder Standard Headroom

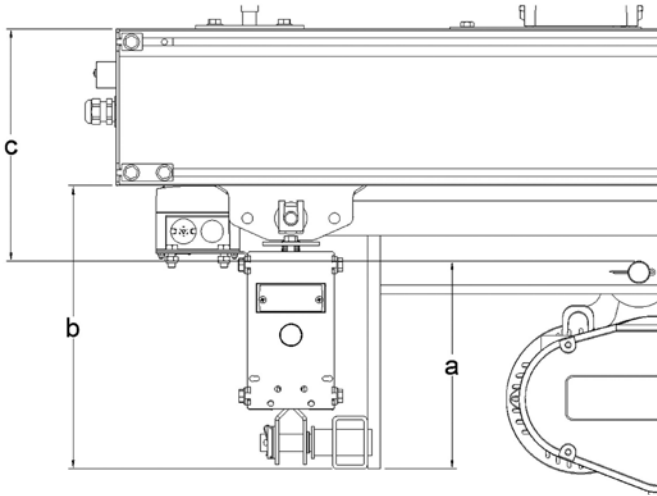


Single Girder Low Headroom

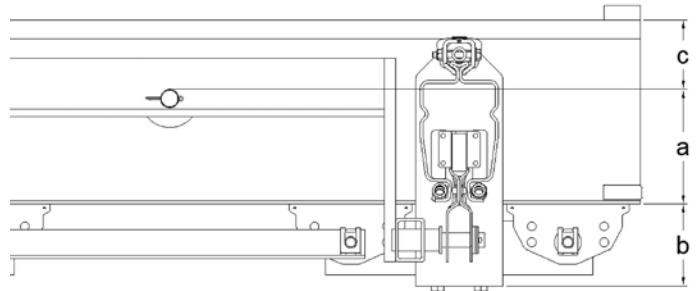
STANDARD & LOW HEADROOM SINGLE GIRDER TIGER TRACK WORKSTATION CRANE BRIDGE & RUNWAY – SPECIFICATIONS

Standard Headroom Bridge					Low Headroom Bridge				
Bridge Track Profile	Runway Track Profile	a (in)	b (in)	c (in)	Bridge Track Profile	Runway Track Profile	a (in)	b (in)	c (in)
S200	S200	1.6	15.0	24.3	S200	S200	1.7	4.6	9.4
	S260	1.6	12.6	24.3		S260	1.7	4.5	11.8
S260	S200	1.6	15.0	24.3	S260	S200	1.7	4.5	9.4
	S260	1.6	15.0	26.7		S260	1.7	4.5	11.8
ALU2	ALU2	1.2	7.1	12.4	ALU2	ALU2	1.1	5.6	5.3
	ALU3	1.2	7.1	13.8		ALU3	1.1	5.6	6.7
	ALU4	1.2	7.1	15.4		ALU4	1.1	5.6	8.2
	ALU5	1.2	7.1	17.0		ALU5	1.1	5.6	9.8
	S200	1.2	7.8	16.7		S200	1.8	6.3	9.5
	S260	1.2	7.8	19.1		S260	1.8	6.3	11.9
ALU3	ALU2	1.2	8.5	13.8	ALU3	ALU2	1.1	5.6	5.3
	ALU3	1.2	8.5	15.2		ALU3	1.1	5.6	6.7
	ALU4	1.2	8.5	16.8		ALU4	1.1	5.6	8.2
	ALU5	1.2	8.5	18.3		ALU5	1.1	5.6	5.9
	S200	1.2	9.1	18.1		S200	1.8	6.3	9.5
	S260	1.2	9.2	20.4		S260	1.8	6.3	11.9
ALU4	ALU2	1.2	10.1	15.4	ALU4	ALU2	1.2	5.6	5.3
	ALU3	1.2	10.1	16.7		ALU3	1.2	5.6	6.7
	ALU4	1.2	10.1	18.3		ALU4	1.2	5.6	8.3
	ALU5	1.2	10.1	20.0		ALU5	1.2	5.6	9.8
	S200	1.2	10.8	19.7		S200	1.8	6.3	9.6
	S260	1.2	10.7	22.0		S260	1.9	6.3	12.0
ALU5	ALU2	1.2	11.7	16.9	ALU5	ALU2	1.2	5.6	5.3
	ALU3	1.2	11.6	18.3		ALU3	1.1	5.6	6.7
	ALU4	1.2	11.7	19.9		ALU4	1.1	5.6	8.2
	ALU5	1.2	11.7	21.5		ALU5	1.1	5.6	9.8
	S200	1.2	12.3	21.2		S200	1.8	6.3	9.5
	S260	1.2	12.3	23.6		S260	1.8	6.3	11.9

Standard and Low Headroom Workstation Cranes Double Girder



Double Girder Standard Headroom

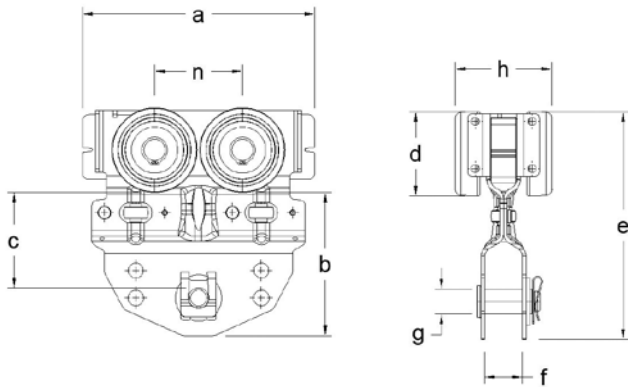


Double Girder Low Headroom

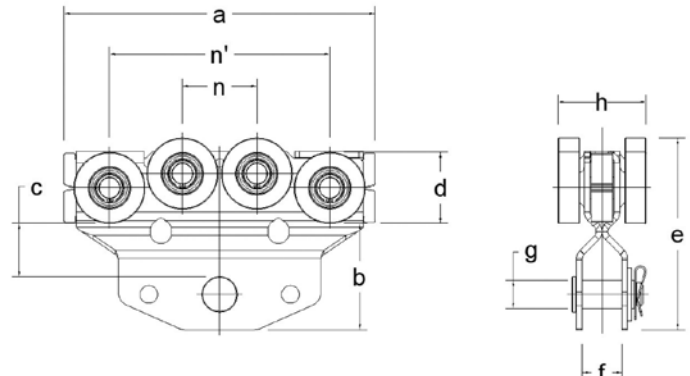
STANDARD & LOW HEADROOM DOUBLE GIRDER TIGER TRACK WORKSTATION CRANE BRIDGE & RUNWAY – SPECIFICATIONS

Standard Headroom Bridge					Low Headroom Bridge				
Bridge Track Profile	Runway Track Profile	a (in)	b (in)	c (in)	Bridge Track Profile	Runway Track Profile	a (in)	b (in)	c (in)
S200	S200	6.1	15.9	14.2	S200	S200	7.0	4.5	0.6
	S260	6.1	15.9	16.5		S260	8.3	4.5	1.7
S260	S200	6.1	18.3	16.5	S260	S200	5.9	4.5	1.7
	S260	6.1	18.3	18.9		S260	8.3	4.5	1.7
ALU2	ALU2	6.7	9.8	4.6	ALU2	ALU2	6.7	5.6	2.6
	ALU3	6.7	9.8	5.9		ALU3	6.7	5.6	1.2
	ALU4	6.7	9.8	7.5		ALU4	6.6	5.6	0.5
	ALU5	6.7	9.7	9.1		ALU5	6.6	5.6	2.1
	S200	6.7	10.4	8.7		S200	6.1	6.3	1.5
	S260	6.7	10.5	11.1		S260	8.5	6.3	1.5
ALU3	ALU2	6.8	11.2	5.9	ALU3	ALU2	6.7	5.6	2.6
	ALU3	6.7	11.1	7.3		ALU3	6.7	5.6	1.2
	ALU4	6.8	11.1	8.8		ALU4	6.6	5.6	0.5
	ALU5	6.8	11.1	10.4		ALU5	6.6	5.6	2.1
	S200	6.6	11.8	10.2		S200	6.3	6.1	1.5
	S260	6.6	11.9	12.6		S260	8.5	6.3	1.5
ALU4	ALU2	6.7	12.8	7.6	ALU4	ALU2	6.7	5.6	2.6
	ALU3	6.7	12.8	8.9		ALU3	6.7	5.6	1.2
	ALU4	6.7	12.8	10.5		ALU4	6.6	5.6	0.5
	ALU5	6.7	12.8	12.1		ALU5	6.6	5.6	2.1
	S200	6.7	13.5	11.7		S200	6.1	6.3	1.5
	S260	6.7	13.5	14.1		S260	8.5	6.3	1.5
ALU5	ALU2	6.7	14.3	9.1	ALU5	ALU2	6.7	5.6	2.6
	ALU3	6.7	14.3	10.4		ALU3	6.7	5.6	1.2
	ALU4	6.7	14.3	12.0		ALU4	6.6	5.6	0.5
	ALU5	6.7	14.3	13.6		ALU5	6.6	5.6	2.1
	S200	6.7	15.0	13.3		S200	6.1	6.3	1.5
	S260	6.7	15.0	15.7		S260	8.3	6.3	1.7

Tiger Track Single Trolleys



Single Trolley - S200/S260 - Steel Track



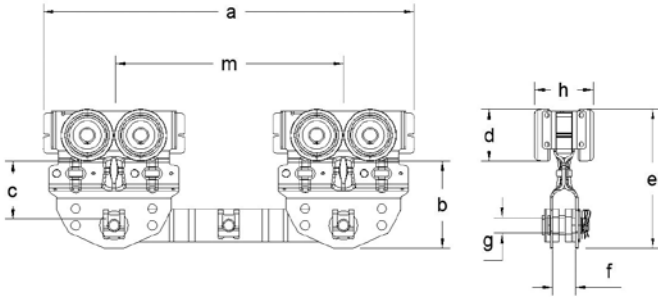
Single Trolley - ALU2/ALU3/ALU4/ALU5 - Aluminum Track

TIGER TRACK SINGLE TROLLEY – SPECIFICATIONS

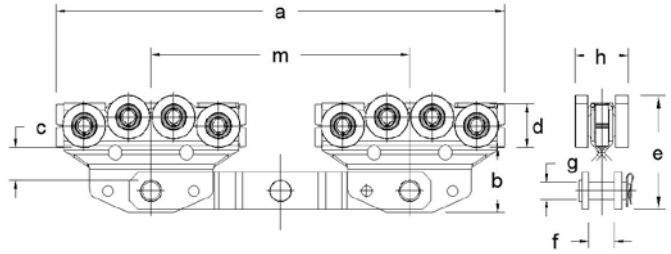
Steel Track Profiles	Allowable Load (lbs)	a (in)	b (in)	c (in)	n (in)	d (in)	e (in)	f (in)	g (in)	h (in)
S200/S260	1763	7.3	4.5	3.0	2.8	2.7	7.2	1.2	0.8	3.0

Aluminum Track Profiles	Allowable Load (lbs)	a (in)	b (in)	c (in)	n (in)	n' (in)	d (in)	e (in)	f (in)	g (in)	h (in)
ALU2/ALU3/ ALU4/ALU5	1322	8.6	3.0	1.5	2.1	6.1	2.0	5.3	1.1	0.8	2.4

Tiger Track Double Trolleys



Double Trolley - S200/S260 - Steel Track

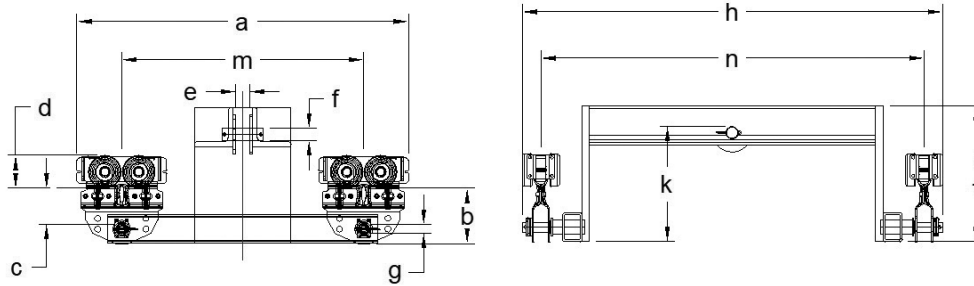


Double Trolley - ALU2/ALU3/ALU4/ALU5 - Aluminum Track

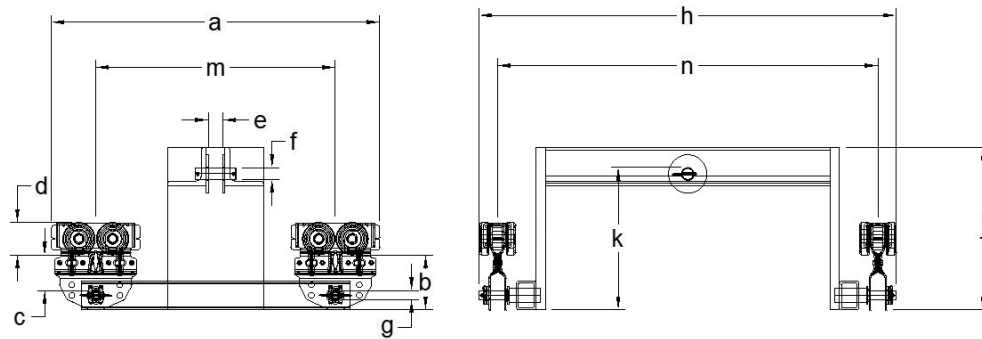
TIGER TRACK DOUBLE TROLLEY – SPECIFICATIONS

Steel Track Profiles	Allowable Load (lbs)	a (in)	b (in)	c (in)	d (in)	m (in)	e (in)	f (in)	g (in)	h (in)
S200/S260	3527	19.1	4.5	3.0	2.7	11.8	7.2	1.2	0.8	3.0
Aluminum Track Profiles	Allowable Load (lbs)	a (in)	b (in)	c (in)	d (in)	m (in)	e (in)	f (in)	g (in)	h (in)
ALU2/ALU3/ ALU4/ALU5	3527	20.5	3.0	1.5	2.0	11.8	5.2	1.2	0.8	2.4

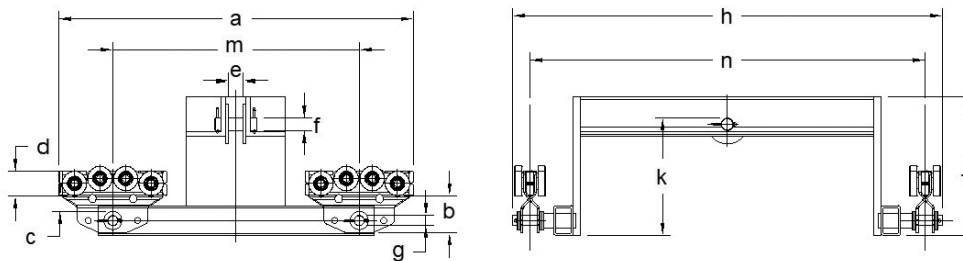
Tiger Track Double Girder Trolleys



Double Girder Trolley - S200 - Steel Track



Double Girder Trolley - S260 - Steel Track



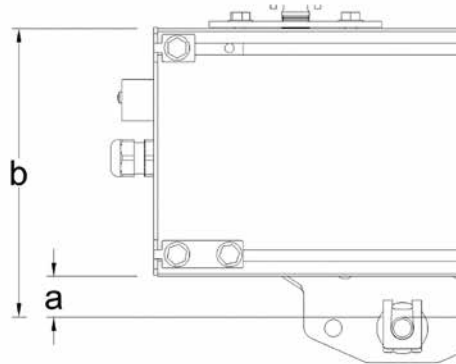
Double Girder Trolley - ALU2/ALU3/ALU4/ALU5 - Aluminum Track

TIGER TRACK DOUBLE GIRDER TROLLEY – SPECIFICATIONS

Steel Track Profiles	Allowable Load (lbs)	a (in)	b (in)	c (in)	d (in)	m (in)	n (in)	e (in)	f (in)	g (in)	h (in)	j (in)	k (in)
S200	4400	27.0	4.5	2.9	2.7	19.7	31.5	1.6	1.1	0.8	34.3	11.0	9.4
S260	4400	27.0	4.5	2.9	2.7	19.7	31.5	1.6	1.2	0.8	34.3	13.4	11.7

Aluminum Track Profiles	Allowable Load (lbs)	a (in)	b (in)	c (in)	d (in)	m (in)	n (in)	e (in)	f (in)	g (in)	h (in)	j (in)	k (in)
ALU2/ALU3/ ALU4/ALU5	4400	28.3	3.0	1.2	2.0	19.7	31.5	1.6	1.2	0.8	34.3	11.0	9.4

Tiger Track Monorails



Steel & Aluminum Monorail System

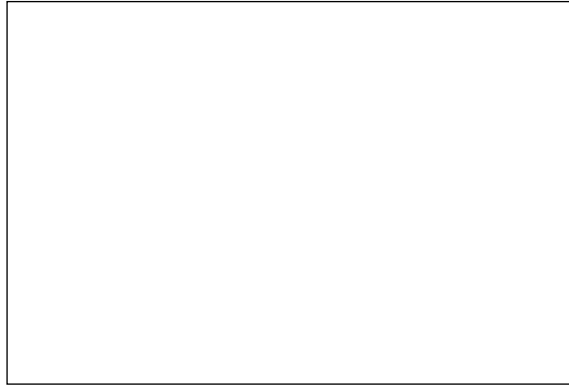
STEEL TRACK MONORAIL SYSTEM – DIMENSIONS

Steel Track Profiles	a (in)	b (in)
S200	1.6	9.2
S260	1.6	9.2

ALUMINUM TRACK MONORAIL SYSTEM – DIMENSIONS

Aluminum Track Profiles	a (in)	b (in)
ALU2	1.2	5.3
ALU3	1.1	6.6
ALU4	1.2	8.3
ALU5	1.2	9.8

**CONTACT YOUR NEARBY
HARRINGTON DISTRIBUTOR**



Warranty

All products sold by Harrington Hoists, Inc. are warranted to be free from defects in material and workmanship from date of shipment by Harrington for the following periods:

- 1 year – Electric and Air Powered Hoists (excluding (N)ER2 Hoists and EQ/SEQ Hoists), Powered Trolleys, Powered Tiger Track Jibs and Gantries, Crane Components, Below the Hook Devices, Spare/Replacement Parts
- 2 years – Manual Hoists & Trolleys, Beam Clamps
- 3 years – (N)ER2 Hoists, EQ/SEQ Hoists, (T)EM/(T)SEM hoists, and RY Hoists
- 5 years – Manual Tiger Track Jibs and Gantries, Hoist Motor Brakes for TNER, EQ/SEQ, (T)EM/(T)SEM, and RY
- 10 years – (N)ER2 Brake, Tiger Track Workstation Cranes, and Monorails

The product must be used in accordance with manufacturer's recommendations and must not have been subject to abuse, lack of maintenance, misuse, negligence, or unauthorized repairs or alterations.

Should any defect in material or workmanship occur during the above time period in any product, as determined by Harrington Hoist's inspection of the product, Harrington Hoists, Inc. agrees, at its discretion, either to replace (not including installation) or repair the part or product free of charge and deliver said item F.O.B. Harrington Hoists, Inc. place of business to customer.

Customer must obtain a Return Goods Authorization as directed by Harrington or Harrington's published repair center prior to shipping product for warranty evaluation. An explanation of the complaint must accompany the product. Product must be returned freight prepaid. Upon repair, the product will be covered for the remainder of the original warranty period. Replacement parts installed after the original warranty period will only be eligible for replacement (not including installation) for a period of one year from the installation date. If it is determined there is no defect, or that the defect resulted from causes not within the scope of Harrington's warranty, the customer will be responsible for the costs of returning the product.

Harrington Hoists, Inc. disclaims any and all other warranties of any kind expressed or implied as to the product's merchantability or fitness for a particular application. Harrington will not be liable for death, injuries to persons or property or for incidental, contingent, special or consequential damages, loss or expense arising in connection with the use or inability whatever, regardless of whether damage, loss or expense results from any act or failure to act by Harrington, whether negligent or willful, or from any other reason.

Harrington Hoists, Inc.
401 West End Avenue
Manheim, PA 17545



www.harringtonhoists.com

Toll Free: 800-233-3010
Phone: 717-665-2000
Fax: 717-665-2861

